

# Meet our Student Leaders in Public Health (SLPH) 2023-24

During the 2023-2024 academic year, the Rocky Mountain Public Health Training Center (RM-PHTC) awarded 27 students in higher education \$3,500 in financial support to assist with public health-focused field placements and faculty-student collaborative projects.

Goal of SLPH: to increase the supply and diversity of the public health workforce in the Rocky Mountain Region, specifically in underserved communities and populations, by supporting students conducting applied public health projects and providing opportunities for mentoring and professional development. This program is funded by HRSA.

For more information visit <https://www.rmphtc.org/student-leaders-in-public-health/>

## COLORADO



### Madeleine Breza

ColoradoSPH- CSU Campus- MPH  
Host Site: Weld County School District 6

Madeleine worked with Weld County School District 6 to evaluate and propose new nutrition programs to implement within the school district.



### Rosie Glaser

ColoradoSPH- UNC Campus- MPH  
Host Site: Planned Parenthood of the Rocky Mountains

Rosie worked with Planned Parenthood of the Rocky Mountains to assess the needs of rural health centers. Rosie also garnered support for Proposed Initiative 89 by delivering speeches at campaign events, including speaking at the Capitol, and created health education curricula for the Responsible Sex Education Institute.



### Guillermo Carlos Besserer-Ochoa

ColoradoSPH - Anschutz Campus - MPH  
Host Site: Health Systems, Management and Policy Department

Guillermo explored barriers to providing curbside healthcare services to patients in a post-pandemic world.



### Katherine Harvey

ColoradoSPH- Anschutz Campus- MPH  
Host Site: Gilpin County Public Health

Katherine worked with the Gilpin County Public Health Department, conducting qualitative and quantitative analysis to inform the creation of a public health improvement plan (PHIP).



### Shenazar Esmundo

ColoradoSPH- Anschutz Campus- DrPH  
Host Site: The Patient Navigation and Community Health Worker Training Program

Shenazar established a community health worker advisory board for the Patient Navigation and Community Health Worker Training Program. She used digital storytelling to engage, inform and strategize program, policy, and research efforts with community health workers in Colorado.



### Allison Kapple

Metro State University Denver - Undergraduate degree in Public Health  
Host Site: Colorado Coalition for the Homeless

Allison supported the integration of medical and dental care to educate patients about health impacts of poor oral health. Allison collected data on diabetes and hypertension, bi-directional referrals made and completed medical screening appointments.



### Jillian Lopina

ColoradoSPH- Anschutz Campus-MPH  
Host Site: Colorado Perinatal Care Quality Collaborative

Jillian worked with the Colorado Perinatal Care Quality Collaborative to plan and host a panel discussion on doulas to improve maternal mortality and morbidity rates in Colorado.



### Matthew Rhodes

ColoradoSPH- Anschutz Campus - MPH  
Host Site: Clinical Trust Solutions

Matthew assisted with survey development, focus group sampling and interviewing to collect qualitative information and data from the greater African diaspora of the Denver community regarding medical preferences, healthcare and vaccine hesitancy.



### Tenejah Mathis

ColoradoSPH- Anschutz Campus- MPH  
Host Site: International Rescue Committee

Tenejah explored barriers that refugees face in accessing the United States healthcare system and provided home healthcare education visits.



### Penelope Velasco

ColoradoSPH- CSU Campus- MPH  
Host Site: Expanded Food and Nutrition Education Program (EFNEP)

Penelope updated the Eating Smart · Being Active (ESBA) maternal and infant lessons, “Feeding My Baby Solid Foods,” based on the 2020-2025 Dietary Guidelines for Americans (DGA).



### Miarri Phillips

University of Colorado- Denver- Undergraduate Psychology & Sociology  
Host Site: The Hummingbird Initiative

Miarri explored the social and structural challenges preventing youth from entering the behavioral health workforce through focus groups, surveys, and stakeholder collaboration. The intended audience was diverse groups of young individuals from rural and urban areas of CO.



### Chelsea Walker-Mao

Colorado SPH - Anschutz Campus - DrPH  
Host Site: CDPHE - Baby and You Program

Chelsea developed engagement, planning, and related activities with the CDPHE Baby and You program to improve partnership with and participation from historically underrepresented communities in Colorado.



### Payton Pohlman

ColoradoSPH- UNC Campus- MPH  
Host Site: Weld County Health Department

Payton created a best practice guide to inform engagement practices with Fort Lupton residents upon establishment of a community clinic.

## MONTANA



### Christian Goes Ahead-Lopez

Montana State University-Billings- MHA  
Host Site: All Nations Health Center

Christian identified priorities and programming needs to assist All Nations Health Center in providing prenatal care through clinical visits and cultural support to improve health outcomes for AI/AN individuals, specifically surrounding birthing persons, infants, and their families.



### Alyssa Pancoast

University of Montana - MPH  
Host Site: Flathead Lake Biological Station

**Ally** partnered with the **Montana Pesticide Stewardship Partnership Program** to educate the public about regional pesticides and their health impacts.

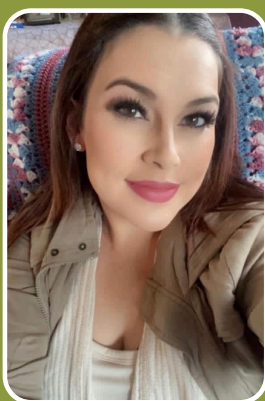
## NORTH DAKOTA



### Chelsea Bellon

University of North Dakota- MPH  
Host Site: Healthy Mothers Healthy Babies, Montana Coalition

**Chelsea** worked with **Healthy Mothers Healthy Babies, MT** to support **Cultural Safety Trainings and Birth Plan Guides** for Western-trained healthcare providers to improve birthing and perinatal experiences of Indigenous birthing people across Montana.



### Jaycilyn Racine

University of Montana- MPH  
Host Site: Blackfeet Tribal Health

**Jaycilyn** partnered with **Blackfeet Tribal Health** to reduce the prevalence of **STD cases** on their Indian Reservation in **Browning, MT** through community outreach.

### Diana Hawkins

University of North Dakota- PhD Indigenous Health  
Host Site: Sisseton Wahpeton Oyate

**Diana** evaluated the **Student Extern Program**, which addresses the need for increased capacity for public health professionals serving the **Sisseton Wahpeton Oyate**.



### Anna Whiting Sorrell

Montana State University- DrPH  
Host Site: Center for American Indian and Rural Health Equity

**Anna** collaborated with the **confederated Salish and Kootenai Tribes (CSKT)** that were disproportionately affected by the **COVID-19 pandemic** to create a **strategic planning template** CSKT can use to create an **emergency preparedness plan**.

### Marie Zephier

University of North Dakota- PhD Indigenous Health  
Host Site: Red Day Woman Consulting

**Marie** worked to improve health outcomes of **Great Plains tribal communities** by conducting a **needs assessment** and interacting with the community.



### Sheylee Stowers

University of Montana- Undergraduate Public Health  
Host Site: University of Montana Center for Population Health Research

**Sheylee** worked with the **AdVICE Team Science Initiative** to address the **critical lack of effective and scalable interventions** to improve and assess **vaccine confidence and uptake** in the U.S.

## SOUTH DAKOTA



### Jason Simon-Ressler

University of South Dakota- MPH  
Host Site: Center for Prevention of Child Maltreatment

**Jason** participated in outreach through **focus group facilitation** of current and former **WIC recipients** as part of the **Women, Infants, and Children Community Innovation and Outreach Project (WIC CIAO)**.



### Rhian Felicia

University of South Dakota - MPH  
Host Site: South Dakota Public Health Association

Rhian worked with SDPHA to create policy resources and promote websites and social media on current public health topics to increase awareness, education and engagement of South Dakotans.

## WYOMING



### Kayla Marsh

University of Wyoming- Physical Education  
Teacher Education  
Host Site: University of Wyoming

Kayla worked with Healthy Pokes Mountain Biking Program to develop and implement a social emotional learning-focused mountain biking after school program at the secondary level in Laramie, Wyoming.

## UTAH



### Montgomeri Douglas

Utah State University- MPH  
Host Site: Utah State University Extension - Utah Youth Know Project

Montgomeri collected data on community sex education in rural areas of Utah and developed LGBTQIA+ tailored sex and health educational materials.



### Denyse Ute

University of Wyoming - Master of Food Science and Human Nutrition  
Host Site: Intertribal Wellness

Denyse worked with the University of Wyoming to perform a needs assessment, develop a culturally relevant nutrition curriculum, and conduct recipe testing on the Wind River Indian Reservation. The project involved community stakeholders, schools, and educators. The education includes information about high rates and severe consequences of Type 2 Diabetes and other chronic diseases.



### Annelise Vorkink

University of Utah - MPH  
Host Site: Salt Lake County Health Department

Annelise worked on a social determinants of health accelerator plan (SDoH AP) to identify and develop plans to address public social-determinants-of-health related needs at the community level.

# Congratulations to our 2023-24 cohort

For more information visit Visit <https://www.rmphtc.org/student-leaders-in-public-health/> to learn more about the application, timeline, and information sessions, contact [Olivia.Jolly@CUAnschutz.edu](mailto:Olivia.Jolly@CUAnschutz.edu)